

# DERBY RUN APARTMENTS, L.L.C. FEATURE:



- Sparkling swimming pool and sun deck
- Fully equipped kitchens
- Playground
- Ceiling fans, mini blinds and vertical blinds
- Freshly painted and decorated
- 24 Hour emergency maintenance
- Resident manager
- Laundry facilities and some laundry hookups
- Extra large closets

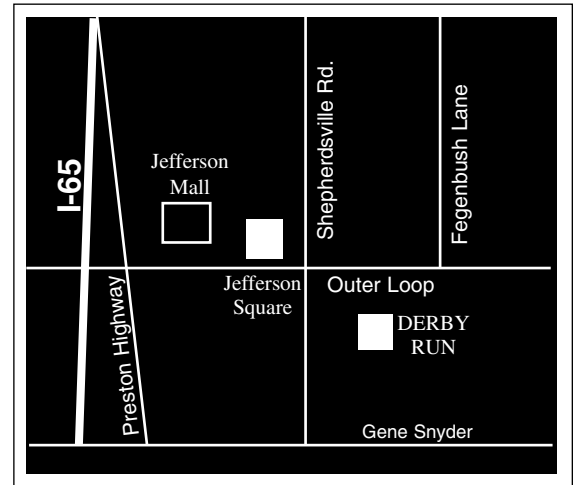
- Cable TV available
- Approved pet allowed
- Smoke detectors
- Wall to wall carpeting
- Bus service
- Individually controlled heating and air conditioning systems
- Loaded with cabinets and closets
- Some apartments have balconies and patios

## FOR YOUR CONVENIENCE

LG&E .....	589-1444	Smyrna Pre-School .....	6401 Outer Loop .....	485-8329
Jefferson Co. Transportation .....	485-3470	Moore High School .....	6415 Outer Loop .....	485-8304
South Central Bell .....	1+557-6500	Thomas Jefferson Middle School .....	4401 Rangeland Rd. ....	485-8273
Jefferson Co. Schools.....	473-3050	St. Athanasius Parish.....	5915 Outer Loop.....	964-9101
Cable TV.....	357-4460	Smyrna Elementary.....	6401 Outer Loop.....	485-8329

## CONVENIENT CITY LIVING IN A PARK LIKE SETTING...

DERBY RUN APARTMENTS, L.L.C. offers the convenience of being within a short distance of schools, restaurants, and shopping. Ideally located near I-65, I-265 and JEFFERSON MALL, Derby Run is located close to everything, yet just minutes from downtown Louisville. Nestled among mature trees, Derby Run offers a park like setting, you'll be proud to call home! Let our prompt maintenance and friendly atmosphere make you happy.



**CHOOSE FROM OUR SPACIOUS FLOOR PLANS...**

# 968-0101



### DERBY RUN APARTMENTS L.L.C.

6600 Outer Loop  
Louisville, KY 40228  
(502) 968-0101

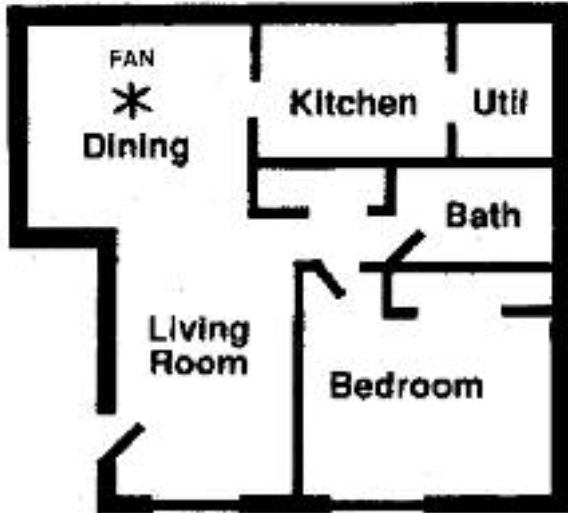
Managed by: *Research Properties, Inc.*

Landlord "Offers the opportunity to inspect, select, and lease housing accommodations without regard to Race, Color, Religion, Sex, Handicap, Familial Status, Age or National Origin."

# 968-0101

## ONE BEDROOM

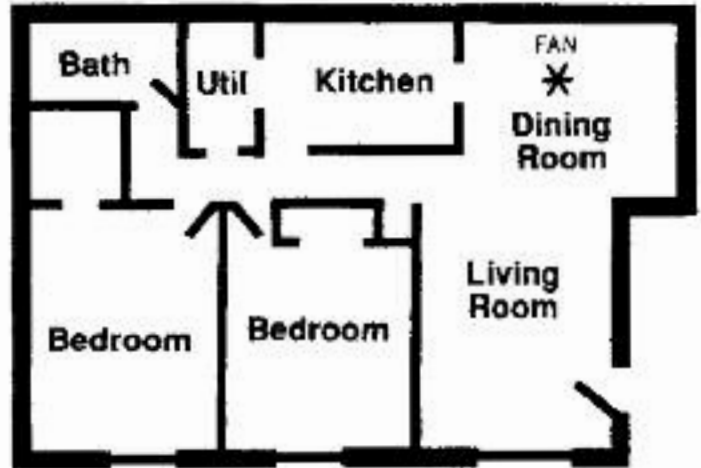
ONE BEDROOM  
ONE BATH



Approximately  
664 Square Feet  
Rental \$ \_\_\_\_\_

## TWO BEDROOM

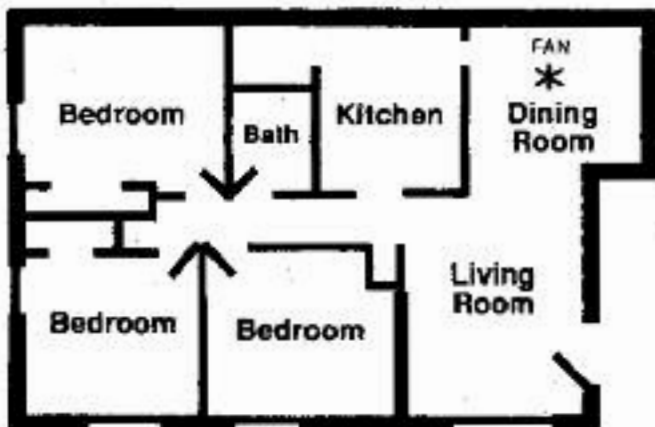
Two BEDROOM  
ONE BATH



Approximately  
968 Square Feet  
Rental \$ \_\_\_\_\_

## THREE BEDROOM

THREE BEDROOM  
ONE BATH



Approximately  
1020 Square Feet  
Rental \$ \_\_\_\_\_

Two BEDROOM  
ONE AND HALF BATH  
WITH PATIO



Approximately  
972 Square Feet  
Rental \$ \_\_\_\_\_  
Washer / Dryer Hook-ups

[www.mybestapt.com](http://www.mybestapt.com)



RENTAL RATES SUBJECT TO CHANGE WITHOUT NOTICE