

# Heather House Apartments, L.L.C. Feature:



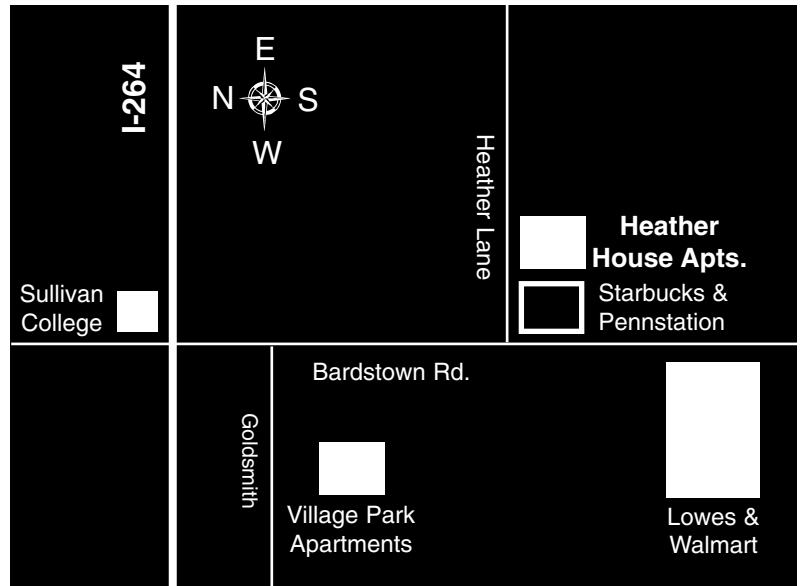
- *NEW! Equipped kitchens*
- *Ceiling fans, mini blinds*
- *Freshly painted and decorated*
- *24 Hour emergency maintenance*
- *Laundry facilities*
- *Breakfast Bar*

- *Approved pets allowed*
- *Smoke detectors*
- *Wall to wall carpeting*
- *Bus service*
- *Individually controlled heating and air conditioning systems*
- *Cable Ready*

## FOR YOUR CONVENIENCE

Insight Cable .....	357-4460	Goldsmith Elementary School.....	485-8258
Jefferson Co. Transportation .....	473-3470	Myers Middle School.....	485-8305
South Central Bell .....	1+557-6500	Seneca High School .....	485-8323
Jefferson Co. Schools.....	473-3050	St. Pius X .....	452-1712

Heather House Apartments, L.L.C. offers the convenience of being within a block of Lowes and Walmart. Your new home is next door to the Starbucks & Pennstation, near the Watterson Expressway (I-264) and walking distance to Sullivan College, yet just minutes from downtown Louisville. You couldn't ask for a more convenient location to walk to work, school, restaurants, and shopping. All the apartments have newer matching appliances with frost-free refrigerators, and full size stoves. The apartments have new thermo pane windows, mini-blinds, two ceiling fans with light kits, and individually controlled furnaces and air conditioners.



## Heather House Apartments, L.L.C.

2206 Heather Lane #113  
 Louisville, KY 40218  
 (502) 458-0809

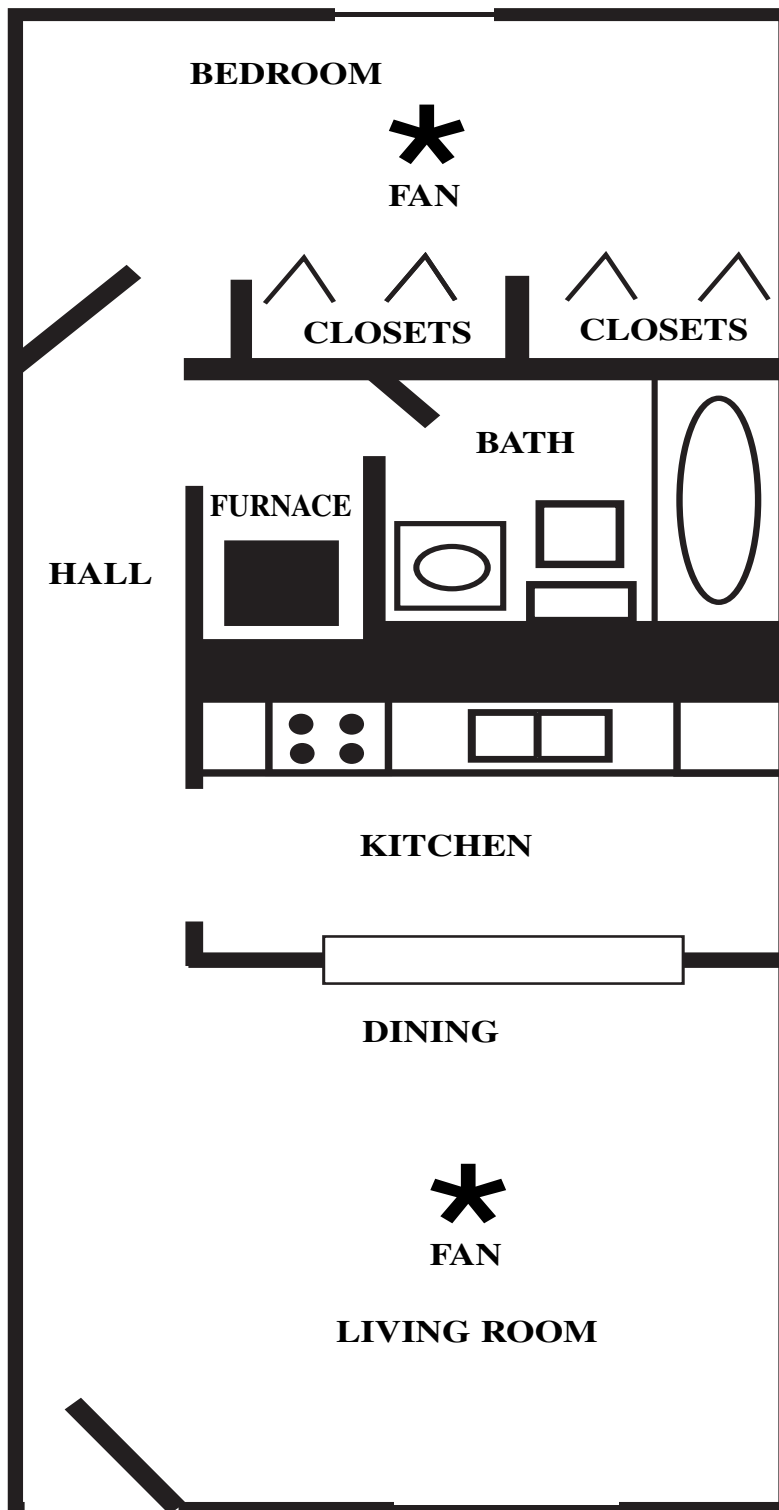
*Managed by: Research Properties, Inc.*

Landlord "Offers the opportunity to inspect, select, and lease housing accommodations without regard to Race, Color, Religion, Sex, Handicap, Familial Status, Age, Sexual Orientation or National Origin."

458-0809

One Bedroom

Rental \$ \_\_\_\_\_



[www.mybestapt.com](http://www.mybestapt.com)



RENTAL RATES SUBJECT TO CHANGE WITHOUT NOTICE