

# Jefferson Square Apartments, L.L.C. Feature:



- *NEW! Fully equipped kitchens*
- *Ceiling fans, mini blinds*
- *Freshly painted and decorated*
- *24 Hour emergency maintenance*
- *Resident Manager*
- *Laundry facilities*
- *Oversized closets*

- *FREE Cable*
- *Approved pet allowed*
- *Smoke detectors*
- *Wall to wall carpeting*
- *Bus service*
- *Individually controlled heating and air conditioning systems*
- *Loaded with cabinets and closets*

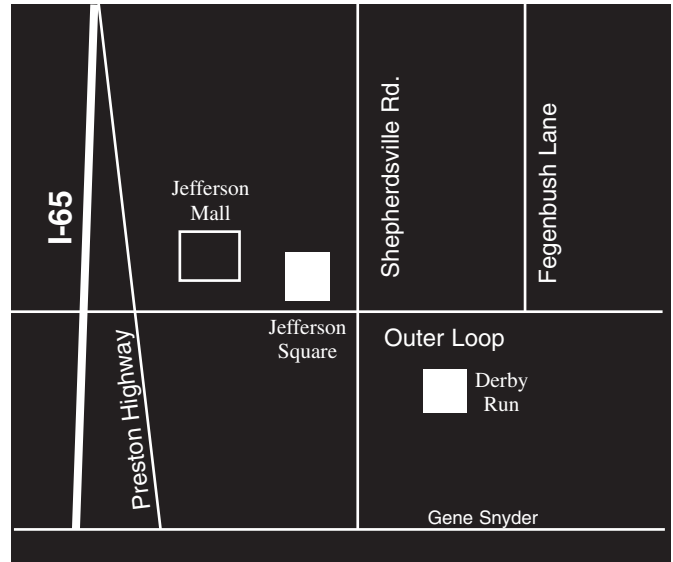
## FOR YOUR CONVENIENCE

LG&E .....589-1444  
 Jefferson Co. Transportation .....473-3470  
 South Central Bell .....1+557-6500  
 Jefferson Co. Schools.....473-3050

Hartstern Pre-School.....5200 Morningside Way .....485-8262  
 Moore High School .....6415 Outer Loop .....485-8304  
 Moore Middle School.....485-8304  
 St. Athanasius Parish.....5915 Outer Loop .....964-9101

Jefferson Square Apartments, L.L.C. offers the convenience of being within a block of Jefferson Mall and a short distance of schools and restaurants. Ideally located near I-65, I-265 and Jefferson Mall, Jefferson Square is located close to everything, yet just minutes from downtown Louisville. Let our prompt maintenance and friendly atmosphere make you happy.

## CHOOSE FROM OUR SPACIOUS FLOOR PLANS...



### Jefferson Square Apartments, L.L.C.

5315 Outer Loop  
 Louisville, KY 40219  
 (502) 968-4262

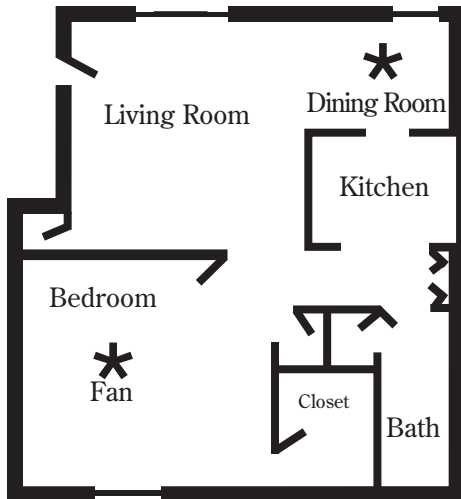
Managed by: *Research Properties, Inc.*

Landlord "Offers the opportunity to inspect, select, and lease housing accommodations without regard to Race, Color, Religion, Sex, Handicap, Familial Status, Age or National Origin."

968-4262

### One Bedroom

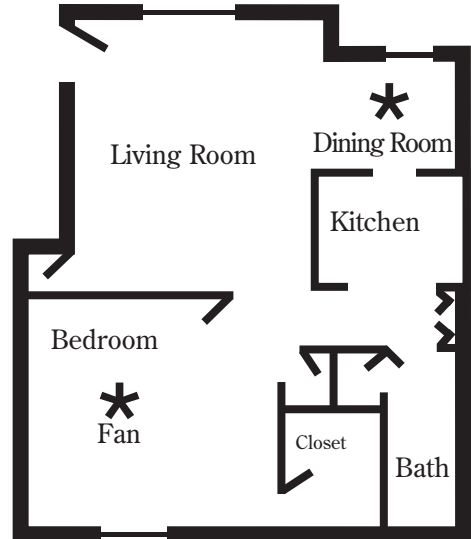
ONE BEDROOM  
ONE BATH



Approximately  
665 Square Feet  
Rental \$ \_\_\_\_\_

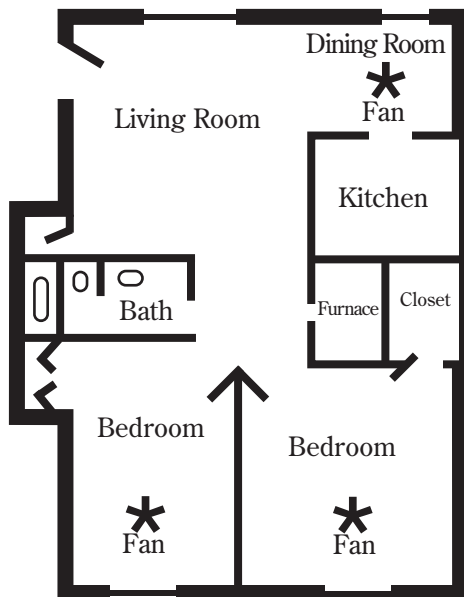
### One Bedroom Deluxe

ONE BEDROOM DELUXE



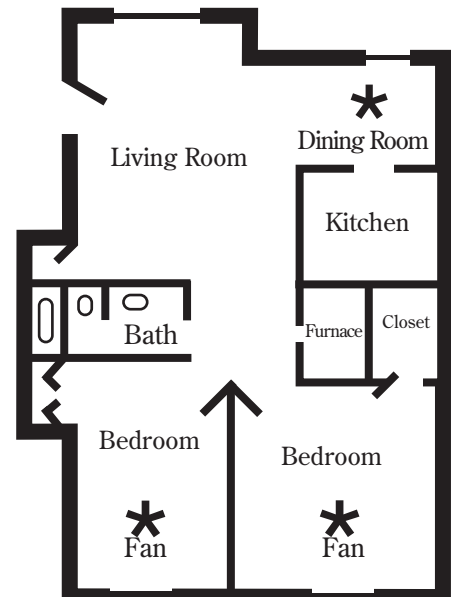
Approximately  
685 Square Feet  
Rental \$ \_\_\_\_\_

### Two Bedroom



Approximately  
745 Square Feet  
Rental \$ \_\_\_\_\_

### Two Bedroom Deluxe



Approximately  
790 Square Feet  
Rental \$ \_\_\_\_\_