

**VILLAGE**  
**P · A · R · K**<sup>SM</sup>  
 APARTMENTS, LLC



- Central heat and A/C
- Huge eat-in kitchen in townhouse perfect for entertaining!
- Freshly painted and decorated!
- Energy efficient storm windows!
- Pet friendly! (no larger than 15" at shoulder)
- Loaded with cabinets and closets!
- Bus Service!

- Overhead lighting with ceiling fans and mini blinds!
- 24 hour emergency maintenance!
- On site clothes care facility!
- Washer / Dryer hookups available in townhouses!
- Convenient location!
- BE PROUD TO CALL US "HOME"
- Check out our company website at <http://www.mybestapt.com>

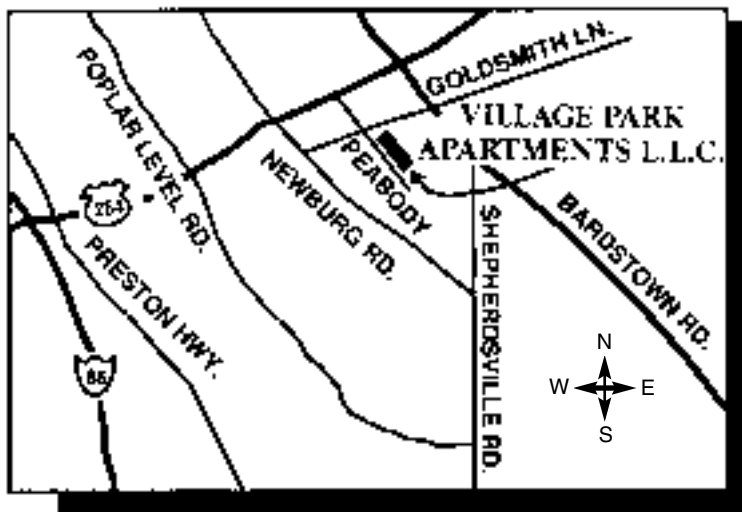
**FOR YOUR CONVENIENCE**

L.G. & E. ....584-1444  
 Jefferson Co. Transportation.....473-3470  
 Seneca High School.....3510 Goldsmith Ln.

Insight Cable - Lloyd Fetzer .....817-1647  
 Goldsmith Elem.....3520 Goldsmith Ln.  
 St. Pius X.....3535 Goldsmith 452-1712

Jefferson Co. School.....473-3050  
 Newburg Middle .....5008 E. Indian Tr.  
 St. Martha ....2825 Klondike Ln 491-3171

Village Park Apartments L.L.C. offers the convenience of being near the Watterson Expressway (I-264), Walmart, Kroger, Target, banking and MUCH MORE!!! We are just minutes from downtown Louisville! There are 4 different floorplans to choose from including 1 bedroom garden style apartments and 2 bedroom townhomes! The bedrooms have ceiling fans with light kits, mini-blinds, tons of closet space, and individually controlled furnaces and air conditioners. Let our prompt maintenance and friendly atmosphere make you happy! Be proud to call Village Park your new home!



**CONVENIENT CITY LIVING  
 IN A PARK LIKE SETTING...**

*Choose from four spacious floor plans*

- One Bedroom with approximately 575 sq. ft
- One Bedroom Deluxe with patio or balcony, approximately 669 sq. ft.
- Two Bedroom with approximately 674 sq. ft
- Two Bedroom, 1 1/2 bath Townhouse with approximately 884 sq. ft.

**VILLAGE**  
**P · A · R · K**<sup>SM</sup>  
 APARTMENTS, LLC

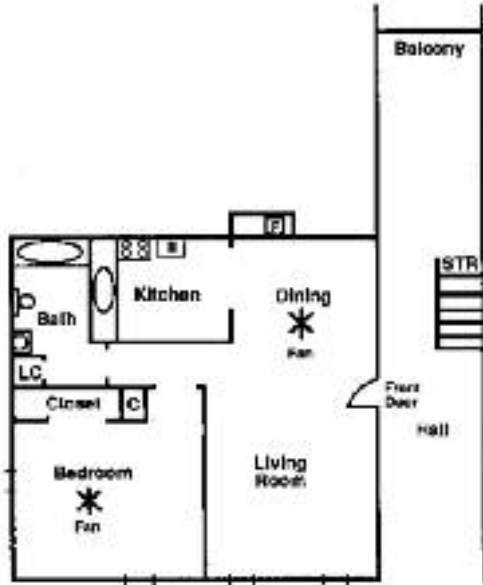
2001 PEABODY COURT  
 LOUISVILLE, KENTUCKY 40218  
 (502) 458-3744

*Managed by: Research Properties, Inc.*

Landlord "Offers the opportunity to inspect, select, and lease housing accommodations without regard to Race, Color, Religion, Sex, Handicap, Familial Status, Age or National Origin."

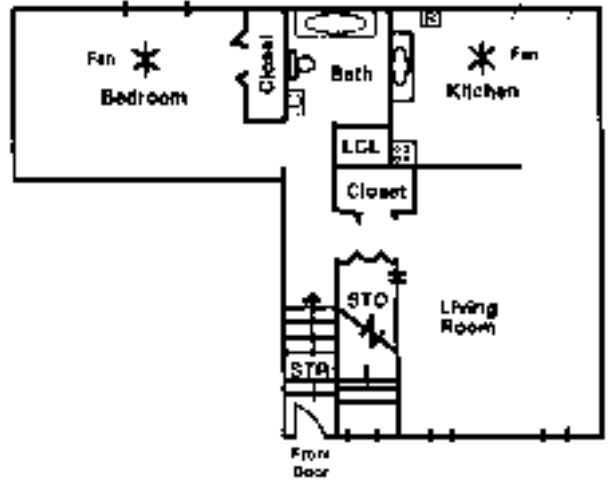
# 458-3744

## One Bedroom



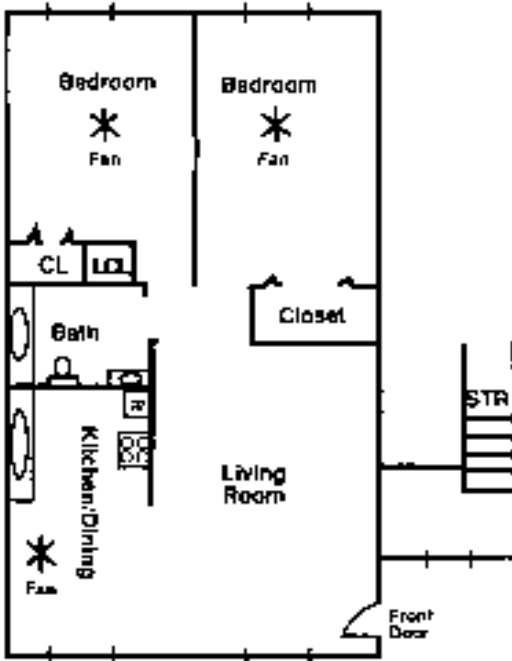
Approximately  
575 Square Feet  
Rental \$ \_\_\_\_\_

## One Bedroom Deluxe



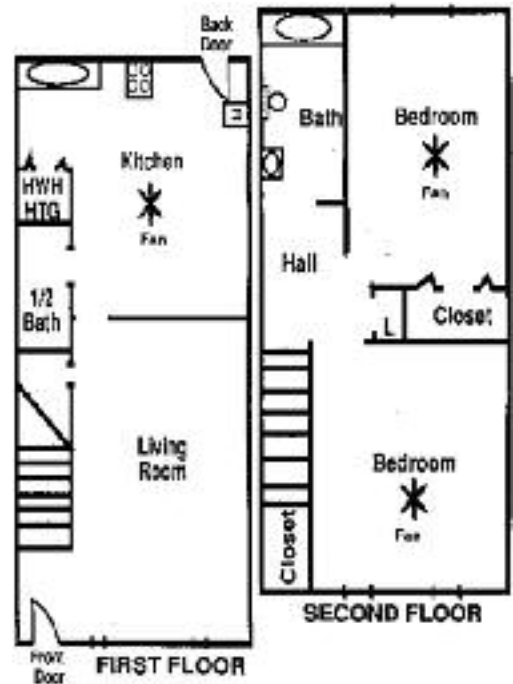
Approximately  
669 Square Feet  
Rental \$ \_\_\_\_\_

## Two Bedroom Flat



Approximately  
674 Square Feet  
Rental \$ \_\_\_\_\_

## Townhouse



Approximately  
884 Square Feet  
Rental \$ \_\_\_\_\_

[www.mybestapt.com](http://www.mybestapt.com)



RENTAL RATES SUBJECT TO CHANGE WITHOUT NOTICE